

# Pulsar™ Collar Connection

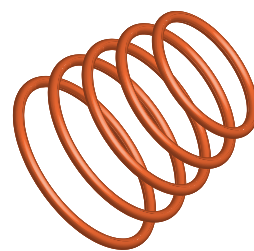
Unlock unparalleled performance with PULSAR™ - the industry's first engineered, BHA specific, double shouldered MWD and BHA collar connection. Redefining industry standards, PULSAR™ presents a sleek design with a smaller relative OD and a larger relative ID compared to standard API connections facilitating enhanced fluid flow efficiency.

PULSAR™ offers optimized torsional capacity, ensuring heightened efficiency and durability in demanding drilling operations. Its seamless connection bore minimizes the risk of fluid erosion by eliminating steps in the ID, ensuring a consistently smooth internal surface. Engineered for longevity, PULSAR™ is meticulously designed and validated through rigorous full scale rotating and bending testing to provide reliability under the most challenging conditions.

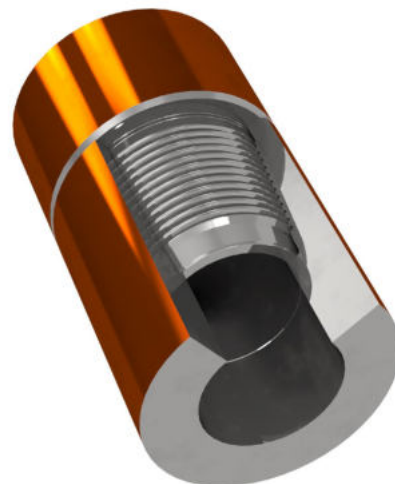
In a world where precision and endurance are non-negotiable, PULSAR™ stands as a testament to innovation, setting new benchmarks for reliability, efficiency, and durability in MWD and BHA collar connections. Elevate your drilling experience with PULSAR™ - where excellence meets evolution.

## Features & Benefits

- **Superior torque transmission:** The innovative double shouldered design enhances torque transmission, ensuring efficient power transfer. Provides performance in extended-reach laterals and challenging well environments.
- **User friendly design:** Enjoy the convenience of conventional shoulder and thread connection, which effortlessly spins until shouldered to the MUT.
- **Sleek profile:** Increased torsional strength that allows for streamlined tool joint OD and ID dimensions, resulting in improved hydraulic performance.
- **Seamless internal diameter:** Zero-gap or change in ID from box to pin, greatly reducing erosion during high internal flow conditions.
- **Enhanced fatigue resistance:** Designed to withstand repetitive stress and fatigue, leading to a longer operational lifespan and reduced maintenance needs.
- **Design validated:** Connection design validated through Finite Element Analysis and verified through exhaustive fatigue and torque testing.

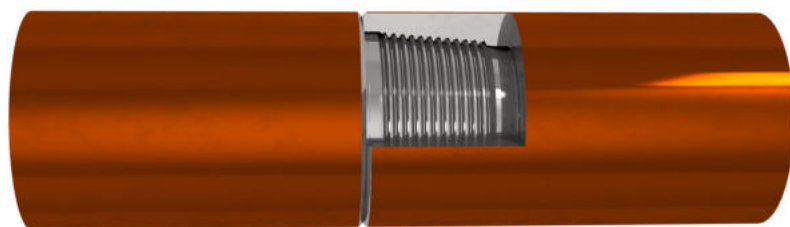


# PULSAR



## Collar Specifications

OD (in)	ID (in)	Grade (ksi)	Connection Name
5.375	3.250	140	Pulsar45G
6.500	3.750	140	Pulsar52G
6.750	4.250	140	Pulsar56G
8.000	4.500	140	Pulsar64





**LOCATIONS**



**USA**

**BLACK DIAMOND CORPORATE**

15425 N. Freeway, Suite 350  
Houston, Texas 77090  
1.281.443.0062

**BLACK DIAMOND BROUSSARD**

1173 Old Spanish Trail, Hwy 182 N  
Broussard, LA 70518  
1.337.359.1994

**BLACK DIAMOND CONROE**

4205 FM 1485  
Conroe, TX 77306  
1.936.441.1480

**BLACK DIAMOND MWD**

2418 N Frazier Street #100  
Conroe, Texas 77303

**BLACK DIAMOND WEST TEXAS**

3510 N. County Rd 1148  
Midland, TX 79705  
1.432.689.0076

**CANADA**

**BLACK DIAMOND EDMONTON**

Wenzel Downhole Tools  
3115 – 93 Street NW  
Edmonton, AB T6N 1L7  
1.780.440.4220

**GUYANA**

**BLACK DIAMOND GEORGETOWN**

Plantation "A"  
Houston District  
East Bank Demerara  
Georgetown, Guyana

**MEXICO**

**BLACK DIAMOND VILLAHERMOSA**

Avenida San Lucas Manzana 2 Bodega 3 y 4  
Parque Logistico Industrial Tabasco  
Rancheria Anacleto Canabal 4ta. Seccion.  
Centrol, Tabasco C.P. 86287  
+52 993 688 8579

**BLACK DIAMOND TAMPICO**

Carretera federal 20 de Noviembre km 18.7  
Congregacion Anahuac  
Pueblo Viejo, Ver., C.P. 92035  
+52 993 688 8579

**MIDDLE EAST**

**BLACK DIAMOND ABU DHABI**

Wenzel Downhole Tools  
Al Markaz Industrial Area  
Waha Land, LT01 B25-32  
Abu Dhabi, U.A.E.  
+971 2 585 2800